



Harrow



Cultivator



Haulage

ACE
TRACTORS



DI 350NG

40

H. P. Power House
King of Rotavator

3 Cylinder Powerful Engine

Bharat III A 

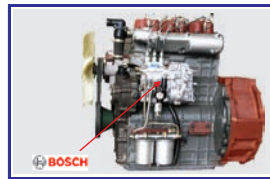
Your's No. 1
Farming Companion

ACE बोले तो नं. 1

Technical Specifications

DI 350 NG

Engine	
Model	A40
Type	3 Cylinder, Direct Injection, Water Cooled
H.P.	40
Bore	105 mm
Stroke	110 mm
Engine Capacity	2858 cc
Engine Rated RPM	1800
Air Cleaner Type	Dry Air Cleaner
Transmission	
Clutch Type	280 mm Dry Type-Single (Double Optional)
Gear Box Speed	8 Forward and 2 Reverse
Final Drive	Direct Rear Axle
Brake	Dry Disk (Serviceable Brake) / Oil Immersed Disk Brakes
PTO	540 RPM 6 Spline (1000 RPM 21 Spline-Optional)
Speed km/h Forward	2.37 – 28.72 km/h (With 13.6 x 28 Tires)
Speed km/h Backward	2.96 & 11.69 km/h
Steering	Single Drop Arm / Power Steering (Optional)
Turning Radius	3.02m, 3.38m (Brakes Applied)
Hydraulics	
Hydraulic Type	Automatic Depth & Draft Control, Live Hydraulics with Mix Modes
Lift Capacity	1200 kgs
Electricals	
Battery	75AH 12V (Maintenance Free)
Alternator	12V - 42 Amp.
Others	
Diesel Tank Capacity	55 Litres
Front Axle	Rigid / Adjustable with Power Steering (Optional)
Tire : Front	6.00 x 16-8 PR
Rear	13.6 x 28-12 PR
Length	3660 mm
Width	1740 mm
Height	2300 mm
Ground Clearance	420 mm
Wheel Base	1960 mm
Weight	1930 Kgs. (With Oil)



3 Cylinder Powerful Engine



Automatic Depth & Draft Control with Live Hydraulic Mixed Mode



Dry Type Air Cleaner



Attractive Meter Consol



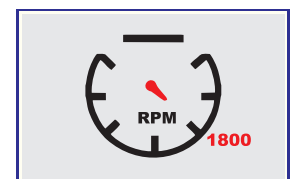
Fuel Tank - 55 Litres



Tipping Pipe



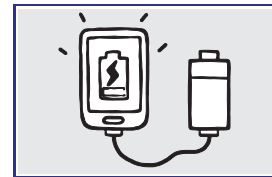
Aerodynamic Bonnet



1800 R.P.M. - More Torque Reduce Engine Wear



Heavy Duty **XTT** Transmission



Mobile Charger



ACE Cost effective Genuine Parts



ACE Cost effective Genuine Oil

ACE

Action Construction Equipment Ltd.

Marketing Head Office

Jajru Road, 25 Mile Stone, Mathura Road, Ballabgarh - 121004 (Haryana)
Ph. : +91-129-2306111, Fax : +91-129-2307562
E-mail : marketingtd@ace-cranes.com

Registered Office & Works

Dudholla Link Road, Dudholla, Palwal - 121102 (Haryana)
Ph. : +91-1275-280111, Fax : +91-1275-280133
CIN : L74899HR1995PLC053860
Website : www.ace-cranes.com

CUSTOMER CARE
TOLL FREE No
1800 1800 004

CVI
CERTIFIED
MANAGEMENT SYSTEM
ISO 9001

ACE INDIA'S NO. 1
MOBILE & TOWER CRANE CO.

Authorised Dealer :

Note : In view of policy of continuous improvements, technical specifications can be varied without prior information. For detailed knowledge, please consult ACE marketing or Authorized Dealer. Accessories shown are not part of the standard equipment.

